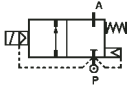


2/2 WAY PILOT OPERATED SOLENOID VALVE, G 1/4" ÷ G 1"



normally closed

TYPE: B203/204/205/206/222

TECHNICAL SPECIFICATIONS

- Media: water, oil, air,
- Media temperature: -10°C ... +90°C
- Ambient temperature: -10°C ... +50°C
- Body material: brass (CW617N EN 12165)
- Operator material: stainless steel
- Operator seal material: NBR
- Seal and Diaphragm material: NBR
- Coil power: AC 10VA (holding)
AC 16VA (inrush)
DC 7W
- Protection class: IP 65 (with connector)

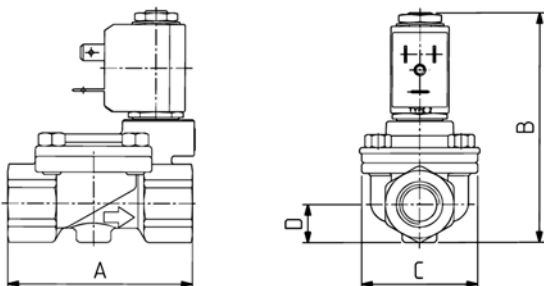


OPTIONS

- Normally open (Ex. code RB206DBY)
- Manual override (Ex. code B204DBZM)
- Speed control screw (only for B206DBYV and B222DBYV)
- EPDM seal for air and hot water MAX 120°C (Ex. code B204DEZ)
- FKM seal for air, water, oil MAX 130°C (Ex. code B204DVZ)
- Version with operator ø 14,5 and coil type 7000 available on request (Ex. code D205DBZ)

SELECTION TABLE

VALVE	G connection	Nominal Diameter	Flow rate kv	OPD			COILS	
				min	max	Code	(Volts/Hz)	
Code	-	(mm)	(l/min)	(bar)	AC	DC	Code	(Volts/Hz)
B203DBZ	1/4"	13	26	0.3	16	16	2250	24/dc
B204DBZ	3/8"	13	55	0.3	16	16	2200	24/50 - 60
B205DBZ	1/2"	13	63	0.3	16	16	2400	110/50 - 120/60
B206DBX compact	3/4"	21	90	0.3	16	16	2600	200/50 - 220/60
B206DBY	3/4"	25	140	0.3	16	16	2700	230/50 - 240/60
B222DBY	1"	25	216	0.3	16	16		



DIMENSIONS & WEIGHTS

G connection	A	B	C	D	weight
-	(mm)	(mm)	(mm)	(mm)	(Kg)
1/4"	67	90	44	15	0.4
3/8"	67	90	44	15	0.4
1/2"	67	90	44	15	0.4
3/4" compact	82	105	50	20.25	0.6
3/4"	96	115	70	23	1.2
1"	96	115	70	23	1.2